

# ActiveImage™ Deploy USB

OS deployment tool  
supporting Windows 11

~ Realizing TCO reduction for deployment work ~

March 11, 2022  
Actiphy Inc.

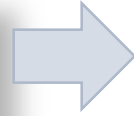
## One-click offers OS deployment to a new target computer

Only Deploy USB device is required



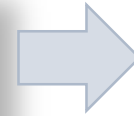
No need for network setting nor deployment server

One-click operation



**One click** offers creation and deployment of the master backup image

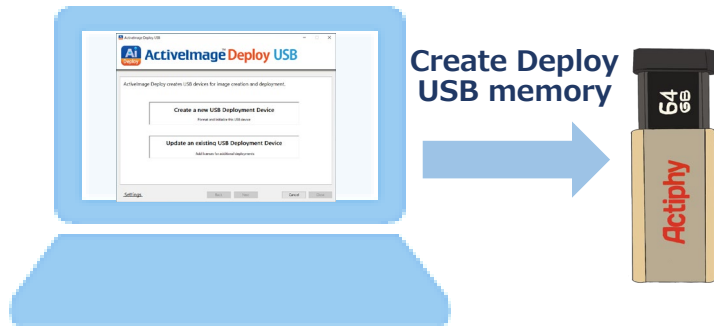
Fast deployment



**40 seconds to deploy 10GB** master image on SSD

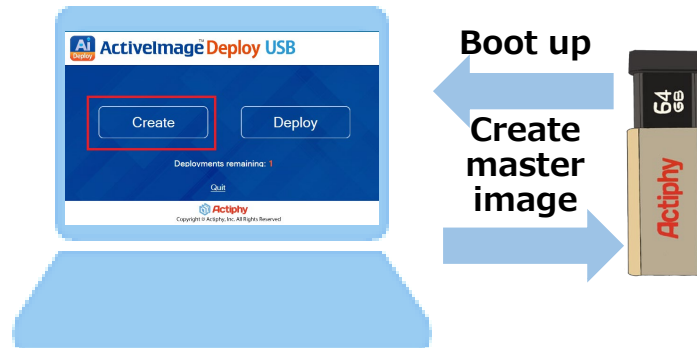
## Create Deploy USB memory

Wizard driven interface guides you through creating a bootable USB device installed with device drivers.



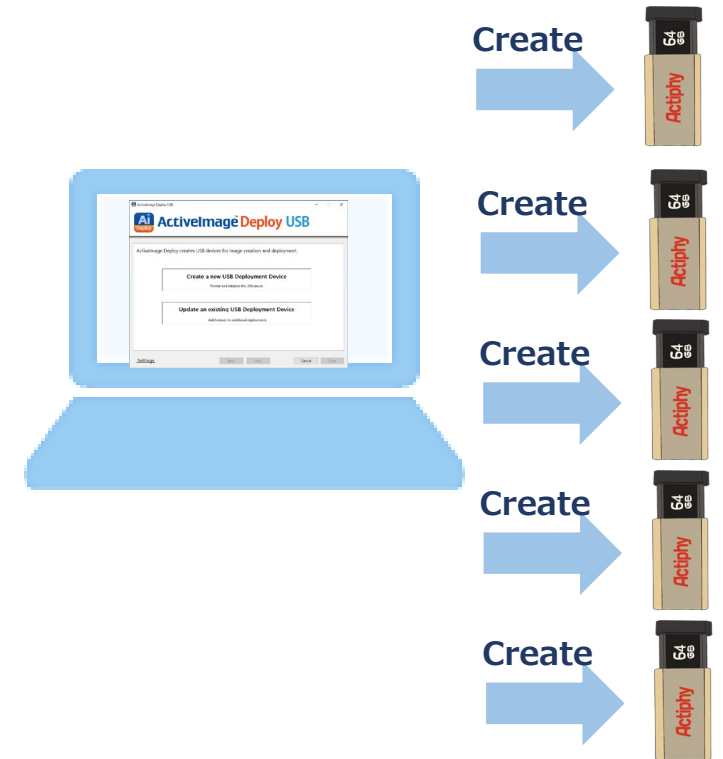
## One click offers creation of master image

Boot up from Deploy USB memory and simply click [Backup] button to create and save the master image in the USB device.



## Sequential Creation of Multiple Deploy USB devices

Provides streamlined work flow for creating a number of Deploy USB devices on a PC equipped with multiple USB slots, saving the master image in the USB devices.



1.5GB of available hard disk space is required to create boot environment and the rest can be used to save master images.



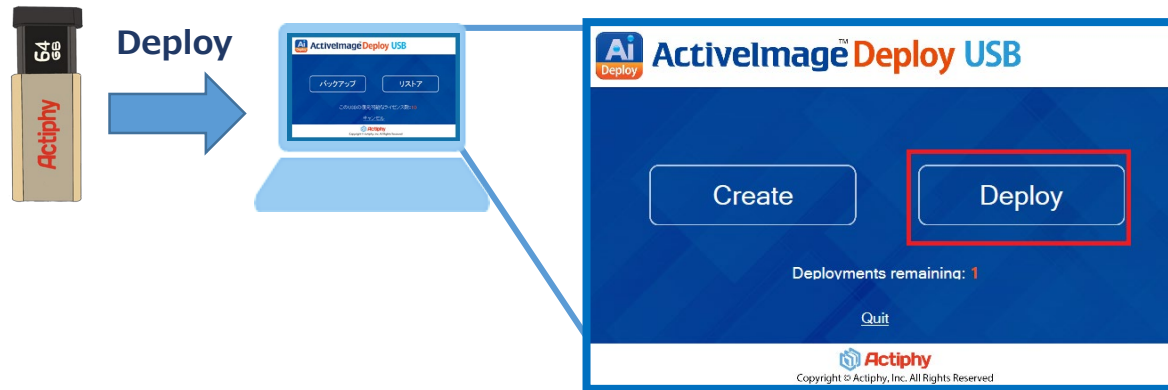
## Streamlined OS deployment from only a small to large number of PCs

You only need to plug in the Deploy USB device and power-on the computer. Attach the Deploy USB device containing the master image to a new target computer and power on the computer. Simply click [Deploy] button to deploy the master image. Small number of PCs may be lined up in a meeting room, while a large number of PCs may be lined up in a warehouse to deploy the master image of a source PC.

### One-click offers deploy task execution

Attach the Deploy USB device containing the master image to a new target computer, boot up the system from Deploy USB memory and click [Deploy] button. IT engineer are free from time consuming configurations.

One-click offers deploy task execution



### OS deployment to a large number of PCs

**We have proven record of OS deployment to 12,000 PCs in a month.**

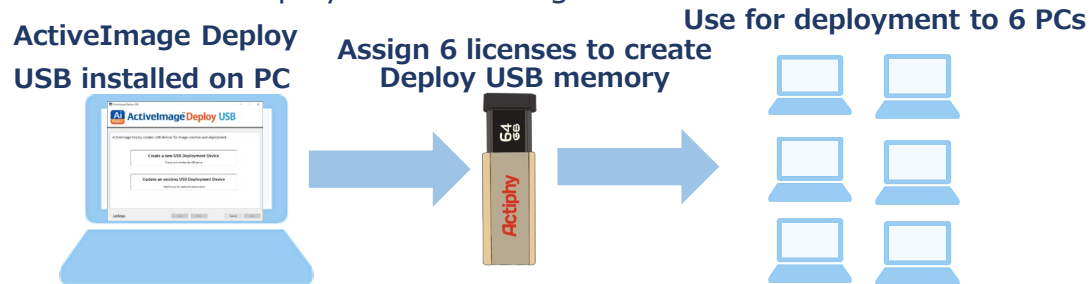


## Easy-to-use GUI making the operation more intuitive, enabling to create a bootable USB

An easy-to-use wizard driven interface guides you through creating a bootable USB device with ActiveImage Deploy USB installed on your computer, adding licenses, creating master images, creating Restore USB device.

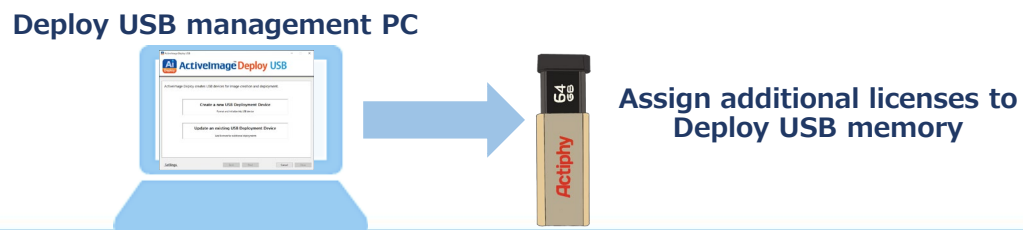
### ■ Create Deploy USB memory

Simply attach the USB device to the source computer and create Deploy USB memory. You need to assign the number of licenses to be used for deployment operation. For example, when creating Deployment USB memory which 6 licenses are allocated to, the Deployment USB memory can be used for deployment to 6 target PCs.



### ■ Assign additional licenses to Deploy USB memory

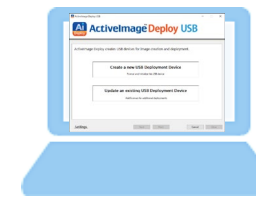
When the licenses assigned to Deploy USB Memory are consumed, attach Deploy USB memory to the PC which ActiveImage Deploy USB is installed and assign additional license, so that you can continue to use the Deployment USB memory for deployment task execution.



### ■ Embed or replace the master image in Deploy USB memory

The created master image is stored on the Deploy USB device or replaced with a different master image.

ActiveImage Deploy  
USB installed on PC

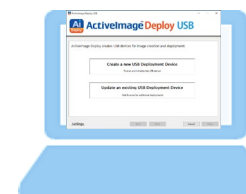


Embed or replace the master  
image in Deploy USB memory

### ■ Create Restore USB device

Restore USB device embedded with a master image is provided to end users for restoring the default setting, when needed.

ActiveImage Deploy  
USB installed on PC



Restore USB device  
embedded with a  
master image





**V2** **Version 2** | 二  
www.version-2.com | 版  
Hong Kong | Taiwan | Singapore | Macau | Mainland China

**Hong Kong & Macau**

Tel : (852) 2893 8860  
Email : sales@version-2.com.hk

**Taiwan**

Tel : (886) 02 7722 6899  
Email : sales@version-2.com.tw

**Singapore**

Tel : (65) 6296 4268  
Email : sales@version-2.com.sg