

ActiveVisor™

Centralized Management Console
for ActiveImage Protector

ActiveVisor Ver. 7

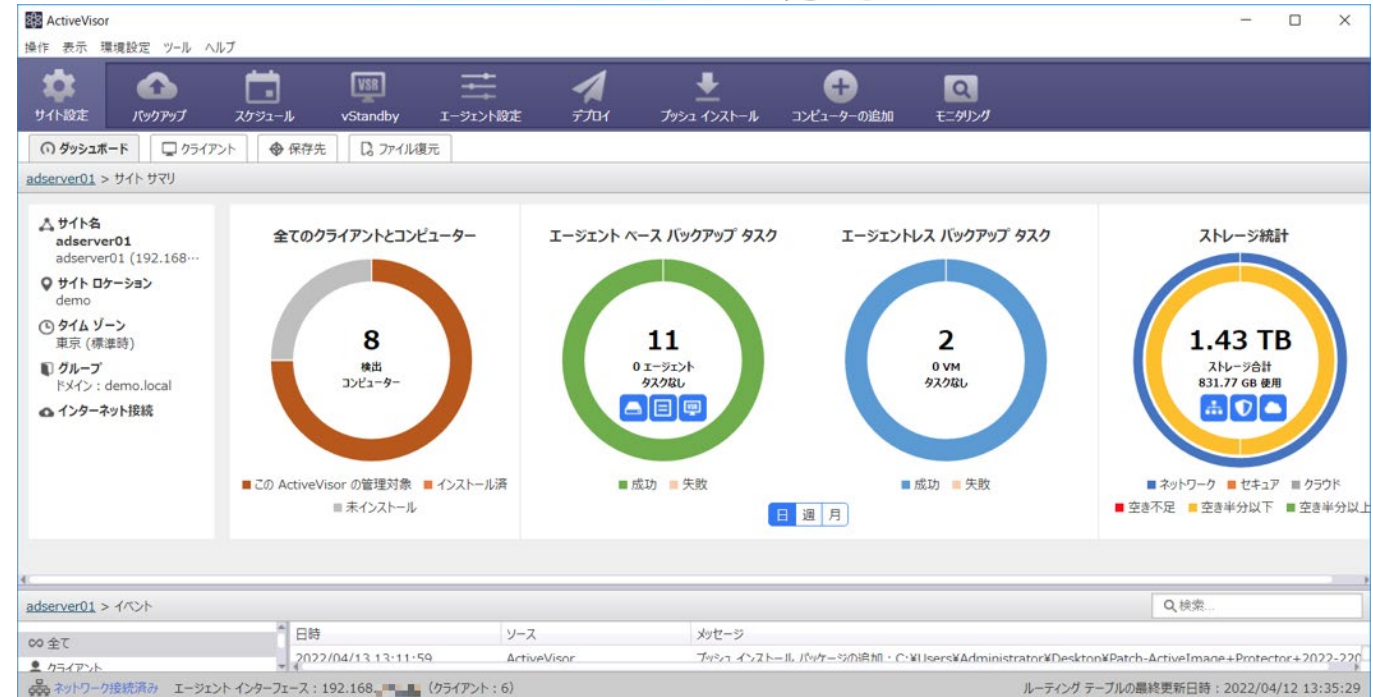
~ Product Summary ~

June 9, 2022

Actiphy Inc.

1. New Features
2. Monitoring Feature
3. Push Install / Deploy Task
4. Direct operation of agent
5. Others

ActiveVisor™



Centralized Management Console for ActiveImage Protector by monitoring overall system protection of the backup source PCs

Enhanced method of real-time monitoring the backup status of client PCs

Support for ActiveImage Protector 2022

Create File Backup task

Create Backup Task / Template by specifying cloud storage as the destination

Push installation of patch program

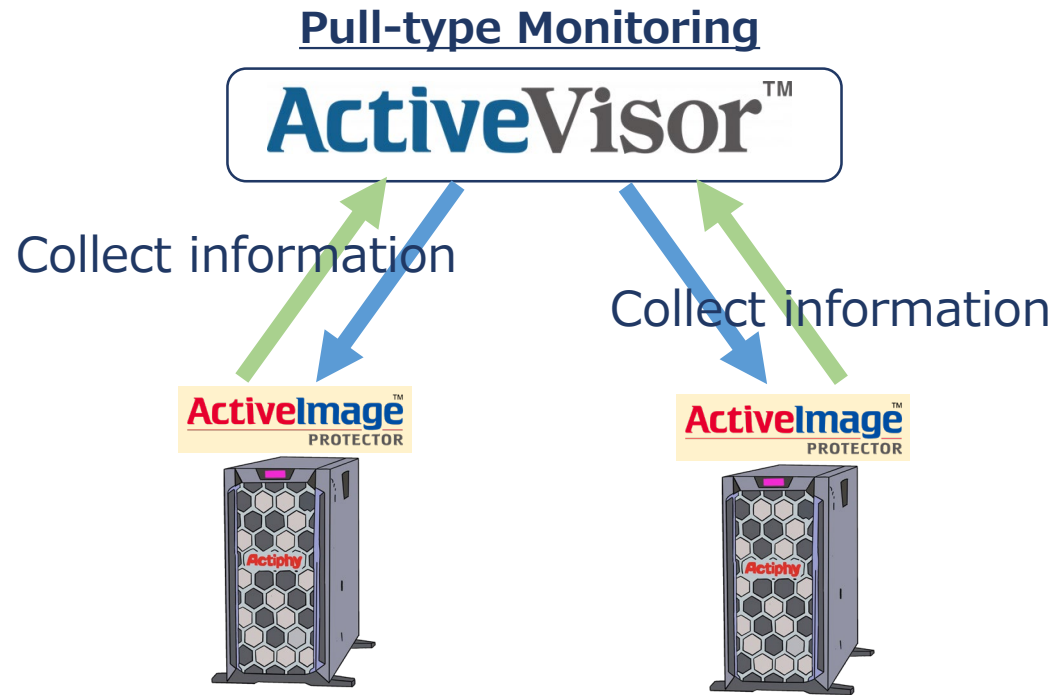
Launch and operate ActiveImage Protector's remote management console

Remote operation of RescueBoot (boot environment)

Enhanced the method from pull to push for monitoring the backup status of backup tasks.

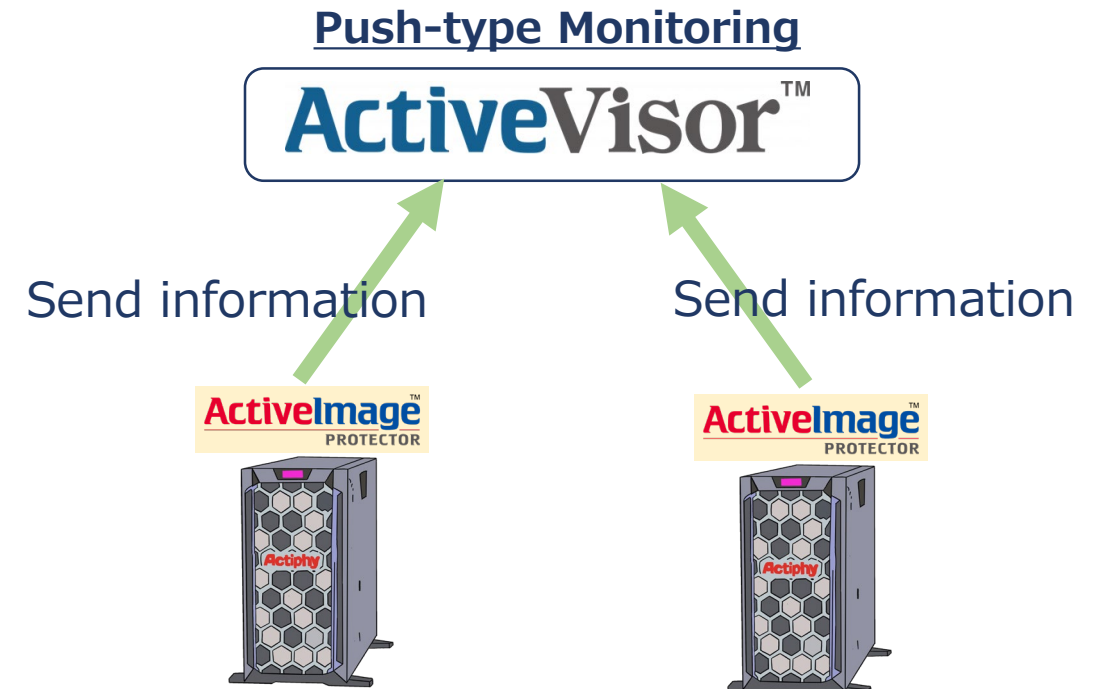
Conventional Method

By regularly collecting information from distributed agents on client machines over the network, ActiveVisor monitors **the information including backup status**.



Enhanced Method

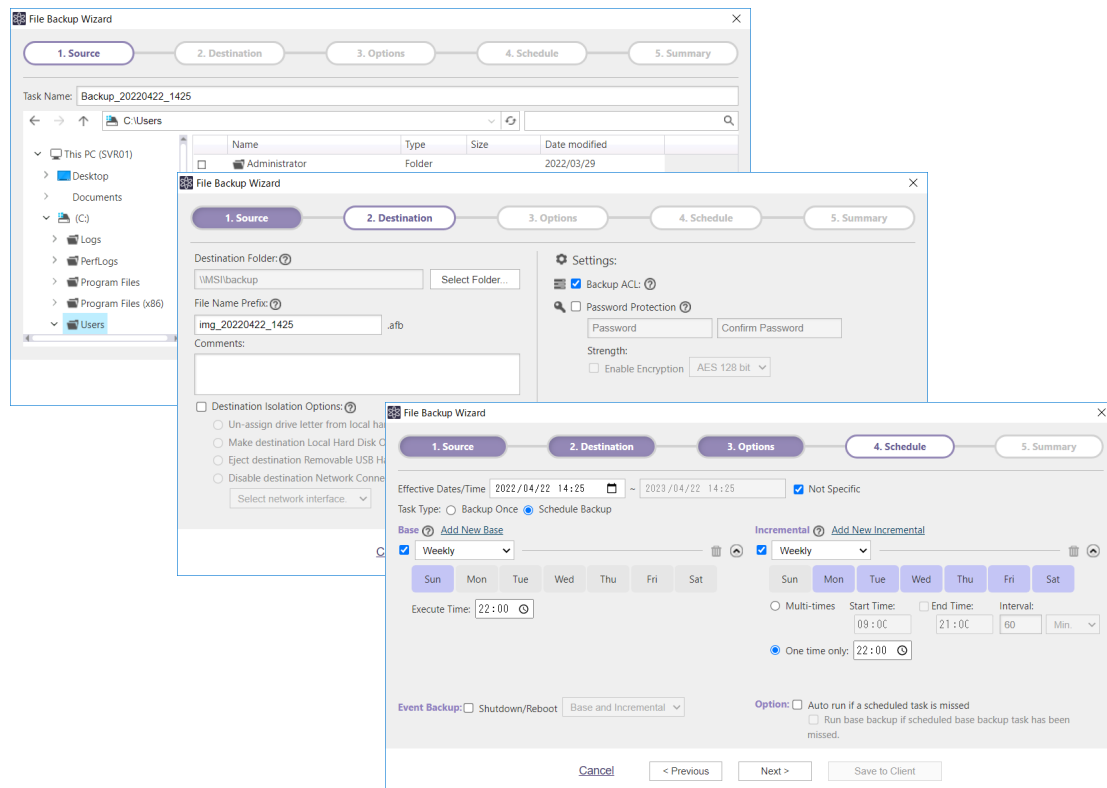
ActiveImage Protector agents on client computers **push the client's information to ActiveVisor which only receives the information** and does not send or obtain extra information, reducing the data communication traffic over the network.



Create File Backup task

ActiveVisor now includes task creation of file-by-file backup tasks for managed clients by directly operating agents.

File Backup Wizard



File Backup Wizard

Task Name: Backup_20220422_1425

Source: C:\Users\Administrator

Destination: WMSI\backup

File Name Prefix: img_20220422_1425

Settings:

- Backup ACL
- Password Protection
- Enable Encryption: AES 128 bit

Schedule:

Effective Dates/Time: 2022/04/22 14:25 ~ 2023/04/22 14:25

Task Type: Backup Once Schedule Backup

Base: Weekly

Incremental: Weekly

Execute Time: 22:00

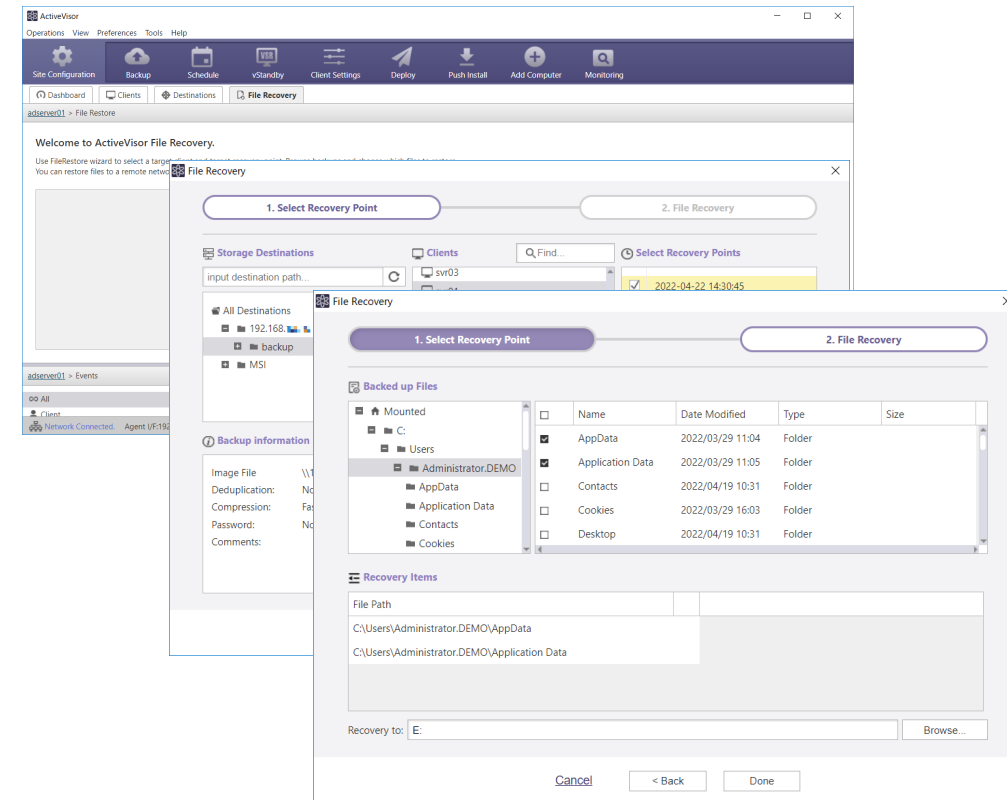
Event Backup: Shutdown/Reboot

Option: Auto run if a scheduled task is missed

Create File Recovery task

You can select a file / folder from an agent-based / agentless backup image file to restore to a file/folder you specify.

File Recovery Wizard



File Recovery Wizard

Welcome to ActiveVisor File Recovery.

1. Select Recovery Point

Storage Destinations: 192.168.1.100, svr03

Backed up Files:

Name	Date Modified	Type	Size
C:\Users\Administrator.DEMO\AppData	2022/03/29 11:04	Folder	
C:\Users\Administrator.DEMO\Application Data	2022/03/29 11:05	Folder	
C:\Users\Administrator.DEMO\Contacts	2022/04/19 10:31	Folder	
C:\Users\Administrator.DEMO\Cookies	2022/03/29 16:03	Folder	
C:\Users\Administrator.DEMO\Desktop	2022/04/19 10:31	Folder	

Recovery Items:

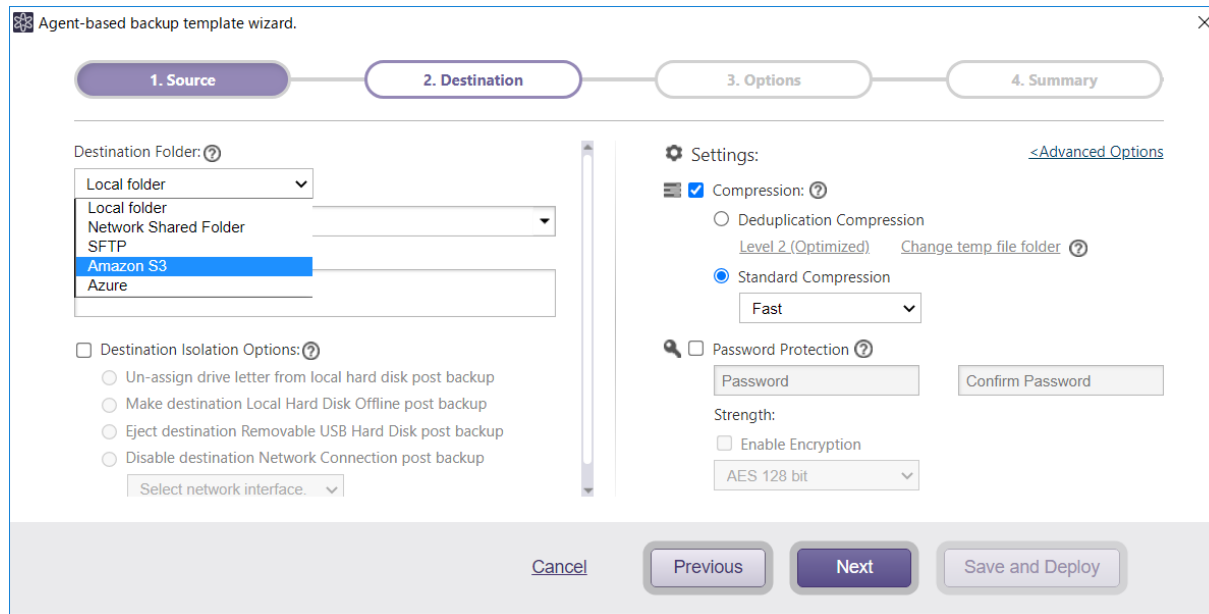
File Path: C:\Users\Administrator.DEMO\AppData

Recovery to: E:

Create tasks / templates to back up directly to cloud storage

Use ActiveVisor to configure tasks to back up directly to cloud storage, i.e., Amazon S3, Microsoft Azure Storage, and SFTP server.

Specify the destination



Agent-based backup template wizard.

1. Source — 2. Destination — 3. Options — 4. Summary

Destination Folder:

- Local folder
- Network Shared Folder
- SFTP
- Amazon S3**
- Azure

Destination Isolation Options: Un-assign drive letter from local hard disk post backup Make destination Local Hard Disk Offline post backup Eject destination Removable USB Hard Disk post backup Disable destination Network Connection post backup

Settings: [<Advanced Options](#)

Compression: [Change temp file folder](#)

Deduplication Compression

Standard Compression

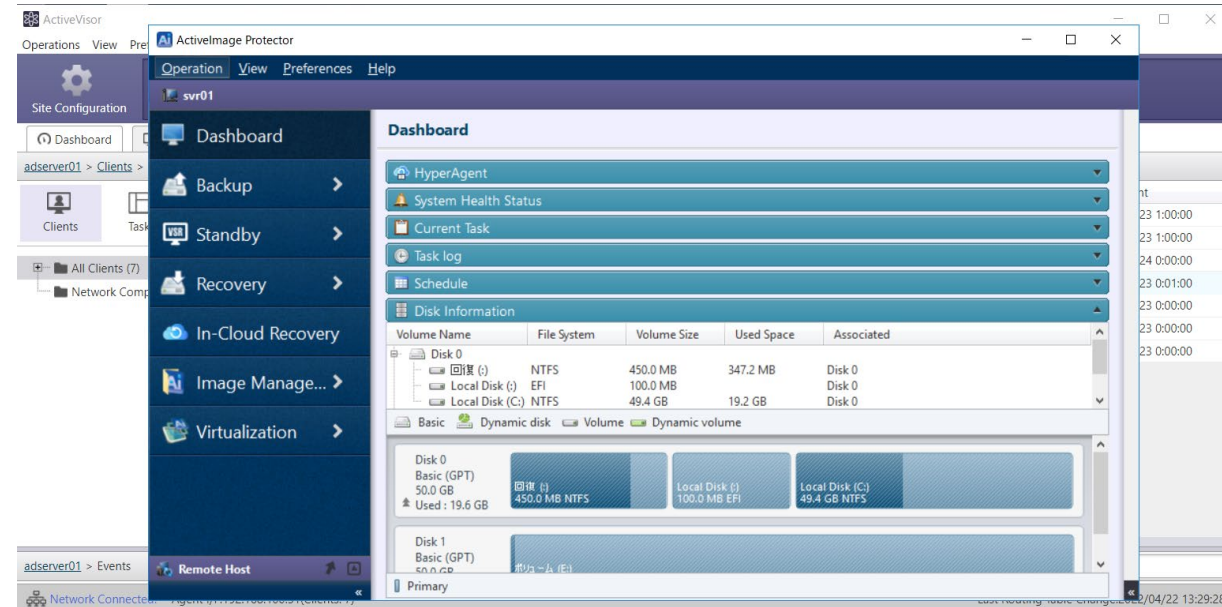
Password Protection

Strength: Enable Encryption

Operate from remote console

ActiveVisor can launch and use ActiveImage Protector's remote console.

Launch remote console over network



ActiveVisor

Operations View Pre ActiveImage Protector

Operation View Preferences Help

svr01

Site Configuration

Dashboard

Backup

Standby

Recovery

In-Cloud Recovery

Image Manage...

Virtualization

Remote Host

Dashboard

HyperAgent

System Health Status

Current Task

Task log

Schedule

Disk Information

Volume Name	File System	Volume Size	Used Space	Associated
Disk 0				
回碟 (D:)	NTFS	450.0 MB	347.2 MB	Disk 0
Local Disk (E:)	EFI	100.0 MB		Disk 0
Local Disk (C:)	NTFS	49.4 GB	19.2 GB	Disk 0

Basic Dynamic disk Volume Dynamic volume

Disk 0 Basic (GPT) 50.0 GB Used: 19.6 GB

Disk 1 Basic (GPT) 450.0 MB NTFS

Primary

adserver01 > Clients

adserver01 > Events

Network Connect

04/22 13:29:28

ActiveVisor enables to remotely operate RescueBoot boot environment on Windows / Linux

Remotely boot up RescueBoot from ActiveVisor

ActiveImage Protector comes with RescueBoot feature enabling system recovery in the event of emergency without the use of external device. **ActiveVisor enables to remotely boot up RescueBoot boot environment on Windows / Linux system.**

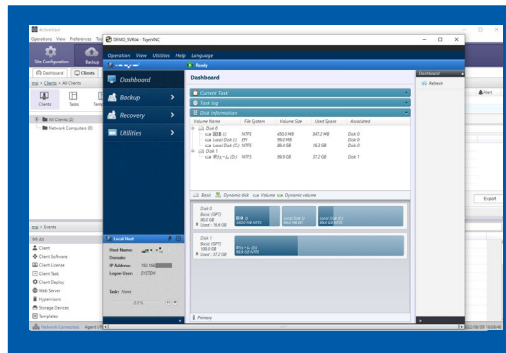
Remotely boot up RescueBoot from ActiveVisor

The new VNC viewer (Windows client) and RDP (Linux client) on RescueBoot feature enables accessing and operating remote clients in RescueBoot boot environment.

System administrator can now restore the failed system in RescueBoot via VNC instead of local PC.

Remote Site

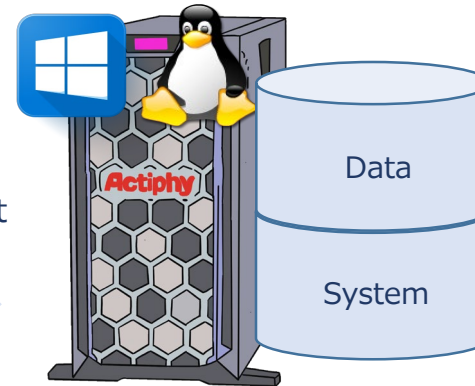
ActiveVisor™



Remotely boot up RescueBoot
boot environment

Remotely access RescueBoot boot environment
For system recovery

ActiveImage™
PROTECTOR



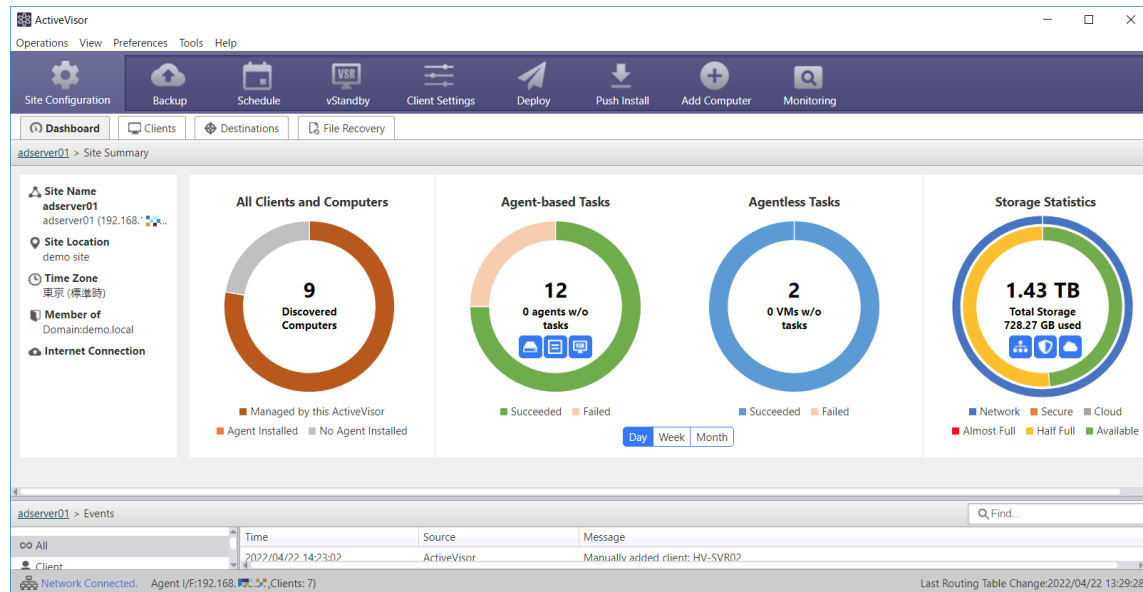
Recovery



Built-in dashboard provides visual representation of status data

Dashboard window provides real time monitoring of the status of back task execution on client PCs, insufficient space for storage management, etc.

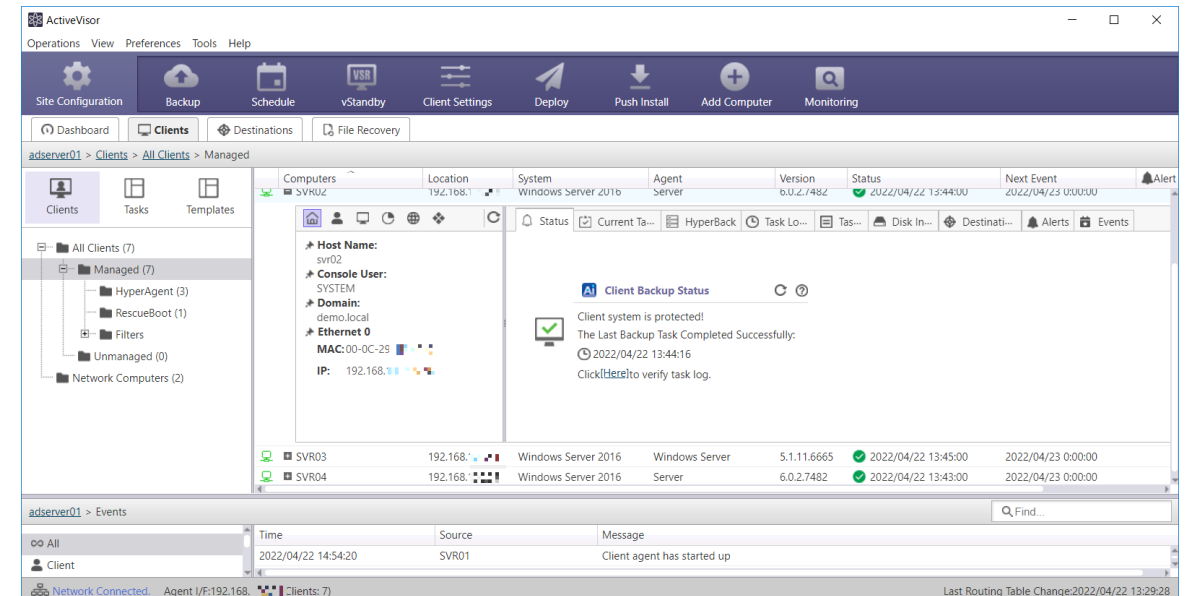
Dashboard window provides real time monitoring



Real-time monitoring of client PCs

ActiveVisor provides visual representation of statistic data and real-time monitoring of the backup status of client PCs. Alert feature provides visual indication of a task failure, indicating the status in red, etc. By regularly collecting information from distributed agents over the network, ActiveVisor displays task execution logs for managed clients.

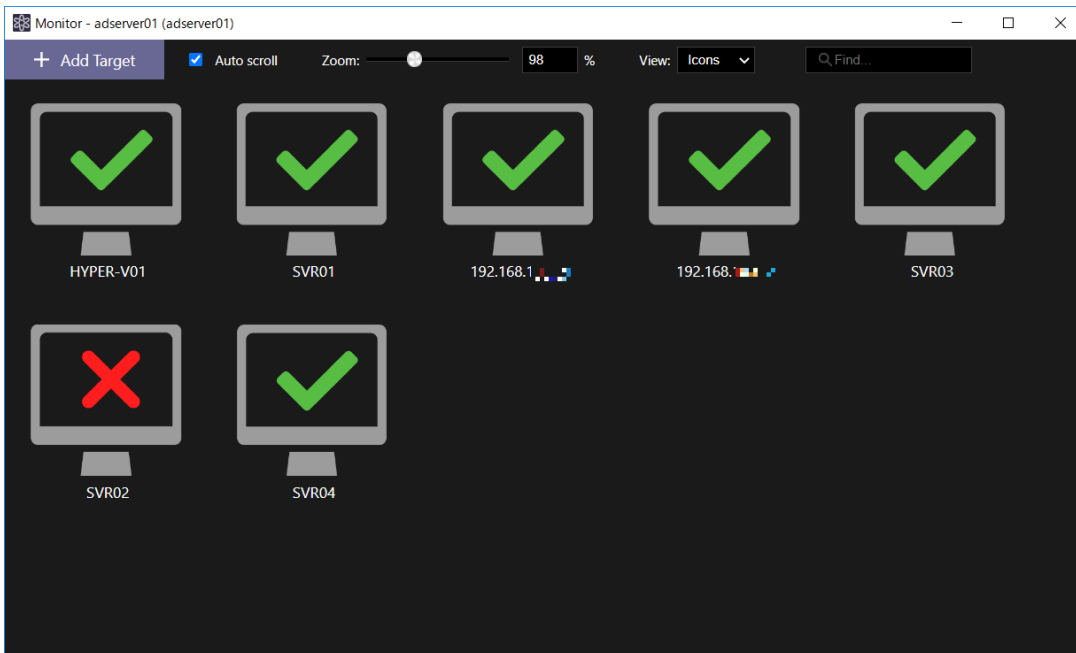
Real-time monitoring of client PCs



Monitor window

Monitor window provides visual indication of successful / failed task execution status and alert indication. The GUI displays a table view illustrating task failure occurred in red on which client, successful task execution in green, non-activated agent in orange.

Monitor window



Monitor the managed client information

Monitoring Details

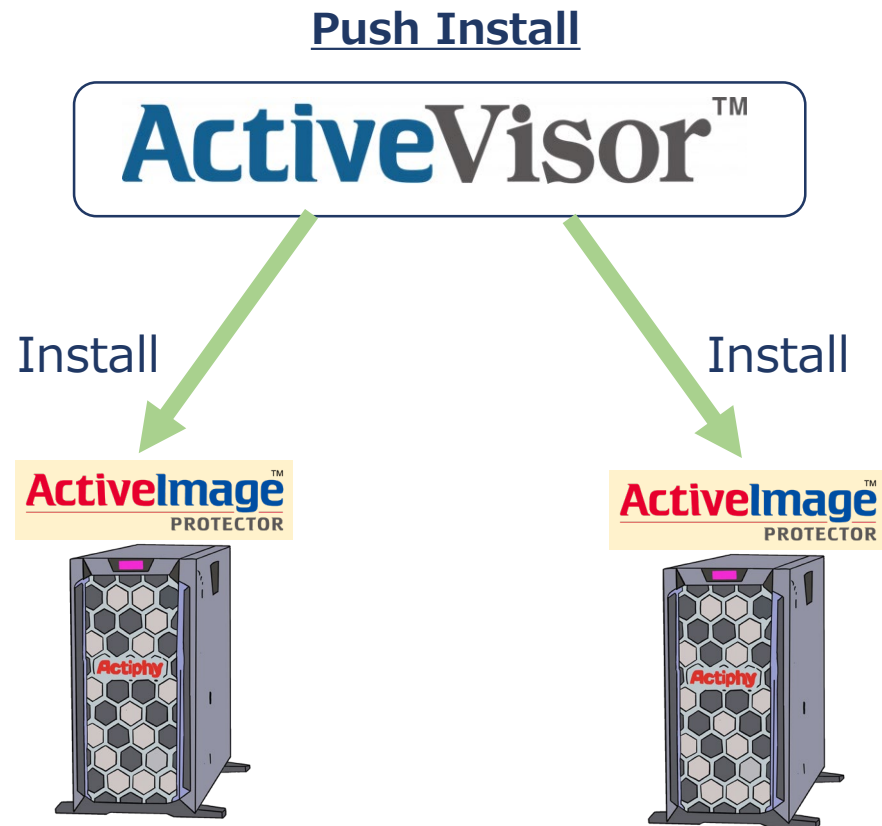
Monitoring Detail						
Task ID	Log ID	Result	Started	Ended	Details	
Backup_2...	1650605428	Success	2022/04/22 14:30:29	2022/04/22 14:30:58	Processed 264.22 MB in 00:00:1...	
Client Bac...	1650602668	Success	2022/04/22 13:44:29	2022/04/22 13:53:47	Processed 18.99 GB in 00:09:17 l...	

Detailed Information

- Inventory information of client PCs
- Task Log
- Task Settings
- Disk information
- Destination storage management
- Alert
- Event

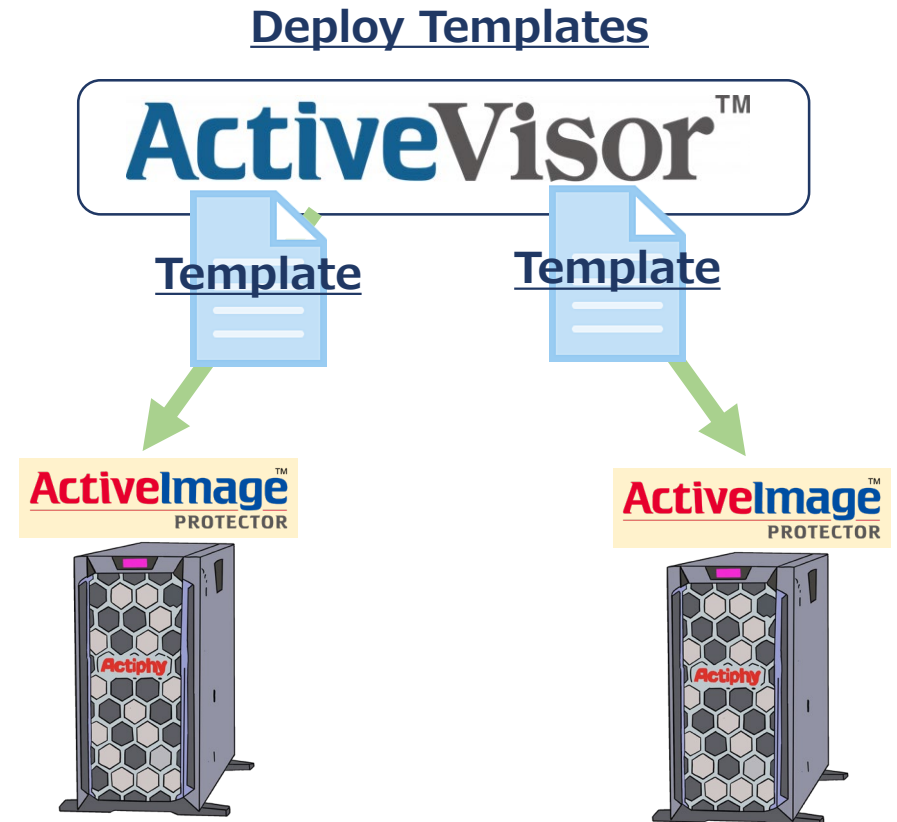
Push Install

ActiveVisor enables push installing ActiveImage Protector software patches and updates to clients in a batch from a single location.



Deploy Task

ActiveVisor deploys templates of pattern-based backup settings, schedules, agent settings to clients in a batch.



ActiveImage Protector Versions and Supported Features

ActiveVisor Features	AIP 2022 Server Build 7292 or later	AIP 2018 Server Build 6454 or later	AIP 2022 Linux Build 7292 or later	AIP 2018 Linux Build 6454 or later
Monitoring	○	○	○	○
Remote Management Console	○	×	○	×
Push Install	○	△(*1)	×	×
Deploy templates	○	×	×	×
Create backup task	○	○	×	×
Re-boot agent	○	○	×	×
Obtain support information	○	○	×	×
Activation	○	○	○	○
Command line interface	○	○	○	○
Change credential information	○	○	○	○
Reboot system	○	○	○	○
Shut-down	○	○	○	○
RescueBoot	○	×	○	×

* 1 : Upgrade installation only to ActiveImage Protector 2022 is supported.

➤ Supported agent version

- ActiveImage Protector 2022
 - Agent version 6.0.0.7292 or later
- ActiveImage Protector 2018
 - Agent version 5.1.11.6454 or later

➤ Recommended environment

- Active Directory domain environment (*1)

*1 : Auto Discovery supports only member computers in domain. You need to enter credential information in [Add Computer] for the respective computers in workgroup to add.



V2 Version 2 | 二版
www.version-2.com
Hong Kong | Taiwan | Singapore | Macau | Mainland China

Hong Kong & Macau
Tel : (852) 2893 8860
Email : sales@version-2.com.hk

Taiwan
Tel : (886) 02 7722 6899
Email : sales@version-2.com.tw

Singapore
Tel : (65) 6296 4268
Email : sales@version-2.com.sg