

Scalefusion ChromeOS Device Management

Unified Management for ChromeOS Devices

Overview

Empower your IT team with Scalefusion ChromeOS Device Management, designed to simplify the management of ChromeOS devices alongside diverse operating systems. Enhance organizational security, streamline device provisioning, and ensure compliance, enabling seamless integration into your existing IT infrastructure.

Benefits

- Simplify the management of ChromeOS devices alongside other operating systems from a single dashboard.
- Protect enterprise data with features like powerwash, application control, and policy enforcement to ensure compliance.
- Facilitate device sharing and personalized access for users, enhancing productivity while maintaining security.
- Automate updates and monitor device health in real time, reducing the burden on IT teams.

Introduction

ChromeOS devices have gained significant traction across various sectors, particularly in education. According to a report by Futuresource Consulting¹, Chromebooks accounted for over 60% of all devices shipped to U.S. K-12 schools in 2022, showcasing their dominance in the educational landscape. Their affordability, ease of use, and robust security features make them an attractive choice, not just for schools but also for organizations looking to equip employees with efficient tools for remote and hybrid work environments.

Industries such as education, healthcare, and retail have increasingly adopted ChromeOS devices to enhance productivity. For instance, many school districts have turned to Chromebooks to facilitate digital learning, while businesses in retail and healthcare utilize these devices for inventory management and patient engagement. As organizations embrace ChromeOS for its lightweight and cloud-centric nature, the demand for effective management solutions has never been more critical.

With this rise in ChromeOS adoption, IT administrators face the challenge of managing diverse devices while ensuring security and compliance. A survey by Gartner highlights that 77%² of organizations are prioritizing cloud-based solutions to streamline operations, further emphasizing the need for a comprehensive strategy that not only simplifies device provisioning and monitoring but also secures sensitive data across these platforms. As the landscape of enterprise mobility evolves, effective management of ChromeOS devices is essential to harness their full potential and maintain a secure, productive workplace.

As organizations embrace a diverse range of devices, including ChromeOS, IT teams often grapple with the complexities of managing a fragmented ecosystem. The proliferation of multiple operating systems—Android, Windows, macOS, and now ChromeOS—complicates the management landscape, forcing IT administrators to juggle various tools and solutions. This fragmented approach can lead to inefficiencies, as teams wander from one management platform to another, attempting to address the unique requirements of each operating system.

The lack of a unified management solution not only increases administrative overhead but also exposes organizations to potential security vulnerabilities. IT teams must contend with disparate policies, inconsistent user experiences, and challenges in ensuring compliance across devices.

While Google Workspace offers essential functionalities for managing ChromeOS devices, it may not provide a comprehensive solution for organizations looking for robust device management capabilities. Google Workspace excels in collaboration and productivity, but its native tools can fall short when it comes to advanced device provisioning, monitoring, and security features.

For many IT departments, this creates a gap—additional capabilities are needed to enhance ChromeOS management beyond what Google Workspace alone can offer.

To streamline operations and protect critical data, organizations need a cohesive device management strategy that bridges the gaps left by existing tools, enabling them to manage ChromeOS devices alongside other platforms seamlessly.

Scalefusion for ChromeOS: Unified dashboard to manage ChromeOS

Scalefusion provides a unified dashboard that addresses the challenges of device fragmentation by simplifying ChromeOS device management. This enables IT teams to efficiently oversee a diverse fleet of devices from a single platform. With its intuitive interface, Scalefusion allows administrators to effortlessly enroll, configure, and manage ChromeOS devices alongside other operating systems like Android, Windows, iOS, macOS, and Linux. This holistic approach eliminates the complexity of juggling multiple management tools, empowering IT teams to enforce security policies, monitor device health, and deploy applications seamlessly.

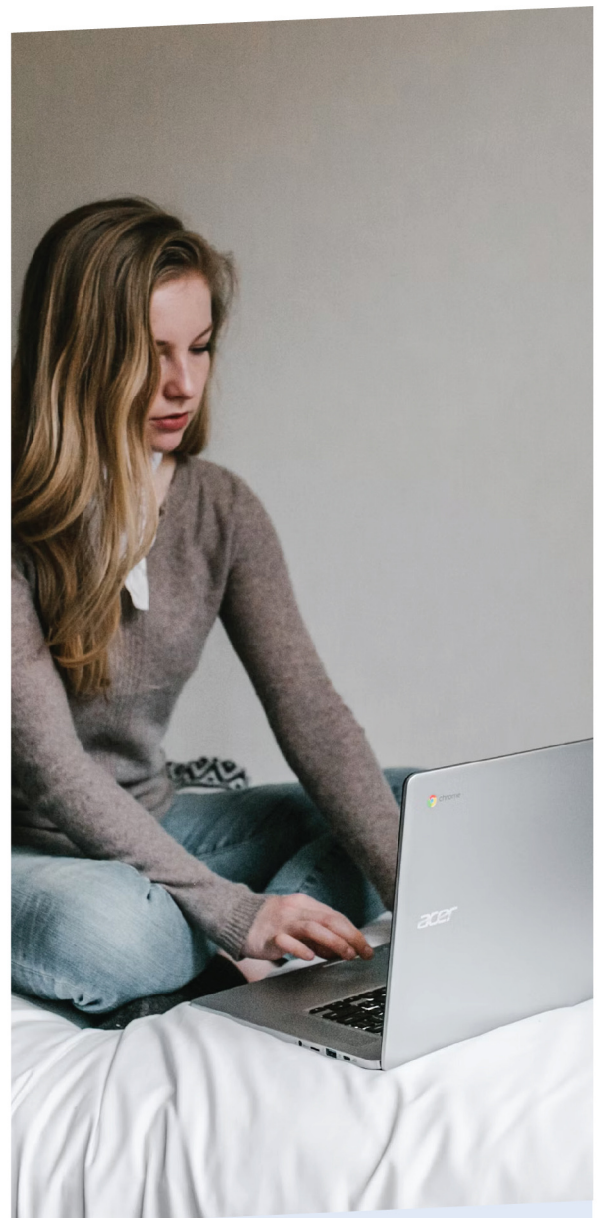
Whether provisioning devices for remote workers or managing shared devices in educational settings, Scalefusion's robust management capabilities ensure that organizations can maintain control and compliance across their entire device ecosystem. By integrating Google Workspace functionalities, Scalefusion enhances the overall management experience, allowing IT admins to leverage existing infrastructure while filling the gaps in ChromeOS device management. This unified solution is essential for organizations aiming to maximize productivity and security in a multi-device environment.

Device Enrollment & User Management

Easily import Organizational Units from Google Workspace to streamline device enrollment and provisioning, ensuring quick onboarding. Additionally, enable device sharing with personalized policies for each user, allowing flexibility while maintaining security.

Policy Management & Tailored Policies

Seamlessly enforce corporate policies across all devices, significantly reducing administrative overhead. Create customized policies to manage network settings and peripheral access, aligning device management with organizational needs.



Try it now for free

Register for a free 14-day evaluation at www.scalefusion.com

Get a Demo

[Request a demonstration and see how Scalefusion can help you in managing your devices and securing your corporate data.](#)

[Book a Demo](#)

Application Control & Kiosk Mode

Manage access to Android apps, web apps, and Chrome extensions with granular control, ensuring that users only access authorized tools. Transform ChromeOS devices into dedicated, single-purpose kiosks, providing enhanced functionality for specific use cases.

Activity Monitoring & SAML Single Sign-On (SSO)

Keep track of activity logs to ensure compliance and security, providing visibility into device usage and potential issues. Simplify user authentication across applications with secure SSO capabilities, ensuring a smooth login experience for employees.

Remote Device Management & OS Updates

Securely wipe devices to protect corporate data and maintain compliance, ensuring sensitive information remains secure. Centrally manage OS updates, scheduling rollouts during maintenance windows to minimize disruptions in productivity.

Greener IT: Reimagining Old Devices for a Sustainable Future

With Scalefusion, enterprises can enhance sustainability and cost-effectiveness by reusing old or deprecated Windows and macOS devices through ChromeFlex. This innovative solution allows organizations to transform aging hardware into functional ChromeOS devices, extending their lifecycle and reducing electronic waste. By leveraging existing resources, businesses not only save on hardware costs but also minimize their environmental impact.

This approach aligns with modern sustainability initiatives, enabling companies to adopt a greener strategy while maintaining productivity. Embracing ChromeFlex with Scalefusion empowers enterprises to maximize their investments and contribute to a more sustainable future.

Why Scalefusion for ChromeOS Device Management



Centralized Control

Scalefusion provides a unified platform for managing ChromeOS devices alongside other operating systems, allowing IT teams to enforce security policies and monitor device health from a single dashboard. This centralized approach simplifies management, reduces the risk of oversight, and enhances overall security.



Improved IT Efficiency

By streamlining device enrollment, policy enforcement, and application management, Scalefusion minimizes the time IT teams spend on administrative tasks. This efficiency enables IT professionals to focus on strategic initiatives rather than juggling multiple tools for device management.



Enhanced Productivity

Scalefusion's seamless integration of device management capabilities empowers employees to work more effectively with easy access to apps and resources. With personalized policies and advanced controls, employees or students can focus on what matters the most, without distractions.



Reduced Costs:

Scalefusion helps organizations save on operational expenses by providing a comprehensive solution for managing a diverse fleet of devices. This consolidation reduces the need for multiple management tools and lowers the overall cost of ownership.

Summary

As organizations increasingly adopt ChromeOS devices, they require a robust management solution to handle the diversity and complexity of their IT environments. Scalefusion for ChromeOS device management streamlines operations by providing a centralized platform that integrates seamlessly with existing tools like Google Workspace. This unified approach not only simplifies device enrollment and policy enforcement but also enhances security and compliance. By effectively managing a multi-OS ecosystem, Scalefusion empowers IT teams to maintain control, improve efficiency, and boost productivity across the organization. With Scalefusion, businesses can confidently navigate the evolving landscape of device management.

About Scalefusion

Ambitious companies around the world trust Scalefusion to secure and manage endpoints including smartphones, tablets, laptops, rugged devices, POS and digital signages. Our mission is to make Device Management simple and effortless along with providing world class customer support.